

SOUVENIR
BOOKLET



MENANGLE SCHOOL

90th. ANNIVERSARY



4th. NOVEMBER, 1961

FOREWORD

In publishing this booklet, the aim is to revive old associations of pupils with their former seat of learning. As the years pass by it is felt that one grows away from his or her early school life. In perusing the following pages, it is hoped that you may once again return, imaginatively, to those days when you frolicked, fought, competed and caroled your way through the interesting days you spent at this fine old school.

The ties you had then may once again be brought back to you, and it is sincerely hoped that much pleasure may be yours in reminiscing over those bygone days..

PROGRAMME

P.M.

2.30 – OPENING AND RECEPTION OF VISITORS

3.00 – UNVEILING OF PLAQUE BY MR R. L. TANNER, B.A., INSPECTOR OF SCHOOLS. PRESENTATION OF POSY AND SOUVENEIRS.

3.30 – OPENING OF NEW RESIDENCE BY MR TANNER, AND INSPECTION OF SAME.

4.00 – AFTERNOON TEA FOR OFFICIAL VISITORS

4.00- DISPLAY BY CAMPBELLTOWN MARCHING GIRLS

4.45 – DISPLAY BY CAMDEN MODEL AERO CLUB

5.15 – TEA

MUSIC BY CAMPBELLTOWN-CAMDEN BAND

H. R. HAWKEY (Chairman)

W.A. TOMKINS (Teacher)

MENANGLE STORE PTY LTD.

**BUTCHERS, BAKERS, PRODUCE AND
GENERAL STOREKEEPERS**

THE LOCAL STORE THAT DELIVERS
THE GOODS PROMPTLY

ALL ORDERS CAREFULLY AND CORRECTLY
ATTENDED TO

D. F. MALONEY PTY. LTD.

DRAPERS AND MERCERS

ARGYLE STREET, CAMDEN

—

PHONE 6 8043

★ FAMILY OUTFITTERS

★ CHILDREN'S, LADIES' AND MEN'S WEAR

★ SHOES

CLIFTON BROS. (CAMDEN) PTY. LTD.

122 ARGYLE STREET, CAMDEN

GROCERS — HARDWARE — PRODUCE

Agents for:—

FARM MACHINERY

SHELL CO. PRODUCTS

KELVINATOR PRODUCTS

FOR SERVICE AND CIVILITY PHONE CAMDEN 6 9274

HISTORY OF MENANGLE

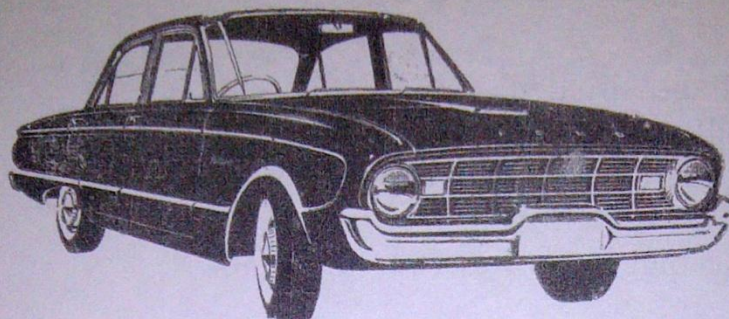
Menangle is a small village situated some eight miles from Camden and Campbelltown and eleven miles from Picton. These three centres each have their own historical backgrounds but Menangle, too, is rich in history which has become intertwined with these bigger centres over the years.

In the latter part of the 18th century when Captain John Macarthur took up the area now known widely as Camden Park Estate, it appears that numerous tribes of aborigines inhabited this district. As the newly named Nepean River was plentifully supplied with fish the name "Menangle" was given to the locality from the time when some aborigines were seen endeavouring to catch fish with their primitive rods and lines.

As clearing of the land progressed and production increased, Captain John employed more and more labour on the Estate until several families were domiciled in this portion of his property. His activities included production of fruit, vegetables, cattle, pigs, wine, and later, small quantities of dairy produce. The latter venture expanded and eventually became the chief industry of the Estate.

Merino sheep had been imported and, to a degree, successfully established. However, in excessively wet seasons, the sheep developed foot diseases and it was decided to remove the best types to drier areas west of the Blue Mountains. Some were retained upon the Estate and their descendants may still be found upon the well grassed slopes and valleys of this historic and beautiful park.

With the continued increase of population and acquiring of properties by settlers arriving from overseas, the need for a school arose. From the records made available by Camden Park Estate it appears that an application for a school was granted to Mr. Jas. Macarthur on 17th November 1849.



BE MODERN

. BUY FALCON

FROM

McALEER MOTORS PTY. LTD

20 ARGYLE STREET, CAMDEN

PHONE 6 8678

CAMERONS

MEN'S WEAR SPECIALISTS

CAMDEN AND CAMPBELLTOWN

TAILORED OR READY TO WEAR

SEE THE LATEST RANGE OF NEW SEASON'S SPORTS SHIRTS
BY COUNTRY CLUB, GLOWEAVE AND CONTINENTAL



A plan of the locality shows the site of both local churches, St James' Church of England and St. Patrick's Roman Catholic Church. The location was known as Riversford, but the name Menangle given to a street and a road within the planned area. Later the name Menangle was finally given to the district.

PINKERTON BROS.

CAMDEN
FOR EVERYTHING
ELECTRICAL

JACKMAN WATSON PTY. LTD.

IRRIGATION — FARM MACHINERY

ALL FARM SUPPLIES

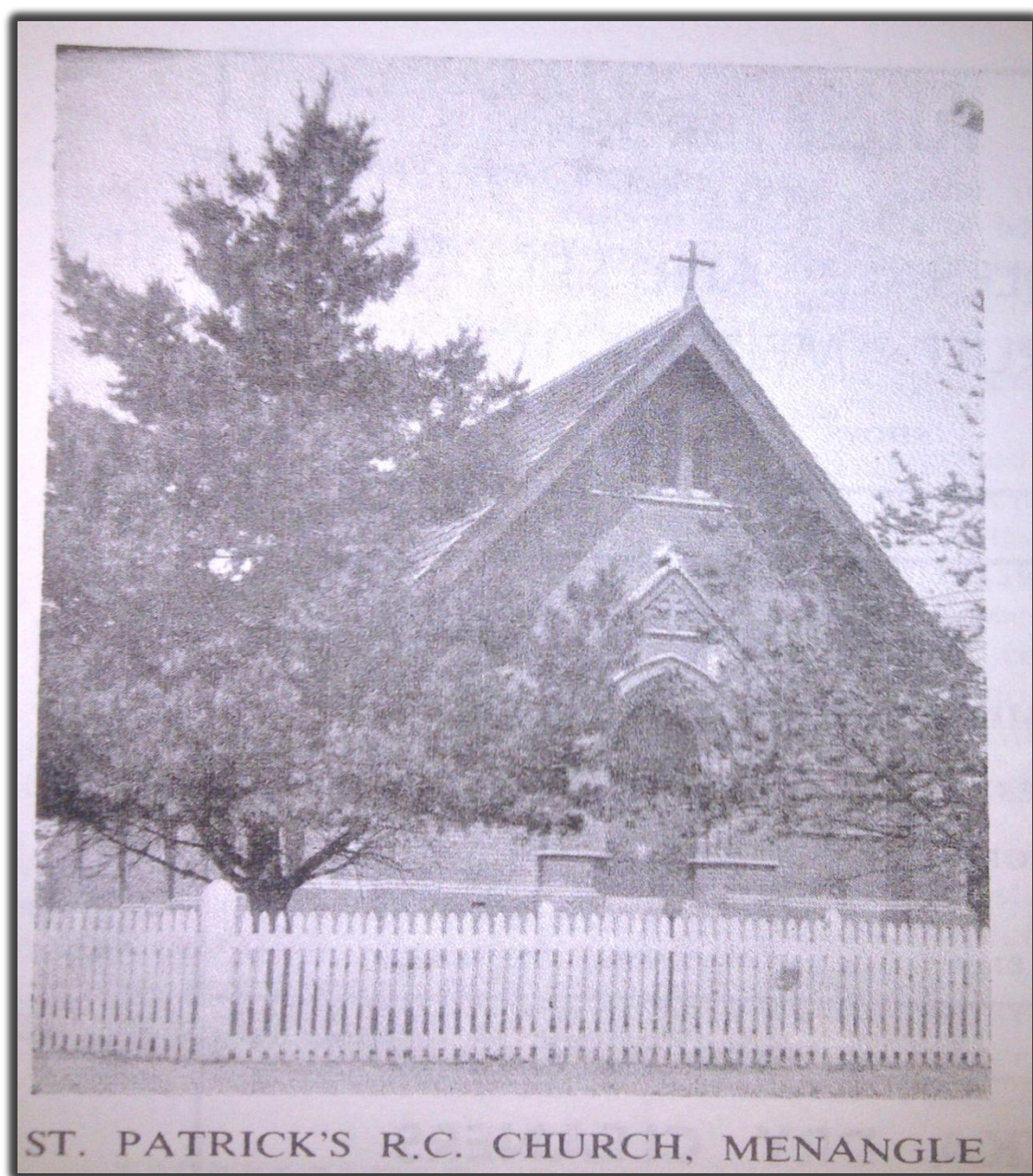
23 ARGYLE STREET, CAMDEN

PHONE 6 8557

CAMDEN TIMBER YARD

38 ARGYLE STREET, CAMDEN

TIMBER AND HARDWARE
SUPPLIES



As the above-mentioned school was a church school various influences arose which desired and brought about the establishment of a public school. This came about during the years 1869-1871 when, at last, the present site was selected.

The school first opened in May 1871 with Mr. Henry Mills as the first teacher.

FULLER BROS

C A M D E N

**WHOLESALE AND RETAIL
FRUIT MERCHANTS**

SHOPS SUPPLIED

CLARK'S PHARMACY – CAMDEN

CHEMISTS AND OPTOMETRISTS

EYESIGHT TESTED — SPECTACLES REPAIRED

**AGENTS FOR CYCLAX, REVLON, MAX FACTOR,
YARDLEY**

RING 6 8165 :: FREE DELIVERY

PUKKA DRY CLEANERS

C A M D E N

★ SAME DAY SERVICE

**★ HIGH QUALITY WORKMANSHIP
AND DELIVERY**

PHONE CAMDEN 6 8380

ACKNOWLEDGEMENTS

The following pages contain many of the incidents, hopes, frustrations and interests of the early life of Menangle.

Old photographs and new ones reproduced have been gathered from many sources and the holding of this 90th anniversary, coupled with the opening of the new residence, has been made easier by the spontaneous co-operation of local residents.

Early history of the school has been supplied by the Division of Research and Planning within the Department of Education, from Mitchell Library and from the kindly assistance of Mr. P. Dawson of Camden Park Estate.

The whole function of the anniversary has been made possible by the very generous donations of local residents, by the Management of Camden Park Estate, Commonwealth Bank in Sydney, G & G Stores, Campbelltown, Clifton Bros. Camden, Menangle Store Pty. Ltd., L. Warby, Campbelltown and advertisers in this booklet.

Our ladies have done a herculean task in providing the catering, while others have given tremendous assistance in many ways by freely undertaking all the tasks which go to make such a function an outstanding success.

To one and all, not forgetting the Campbelltown Marching Girls, Camden Model Aeroplane Club and Campbelltown-Camden Band, may we say a big "THANK YOU."

MENANGLE PUBLIC SCHOOL

An application for a public school was lodged with the Council of Education in October 1869 and aid was granted in the same month. The next year plans were drawn up for a school and it was completed in 1871. The school opened in the same year with an enrolment of 43 pupils. Up to 1874 the continuity of education at the school was affected by Mr. Mills' transfer from the school and his re-appointment.

EARLS DELICATESSEN

C A M D E N

PHONE 6 8668

**HOME OF GOOD TO EAT
DELICACIES**

FURNER BROS. PTY. LTD.

FOR ALL HARDWARE REQUIREMENTS

CAMDEN

—

PHONE 6 8005

BRITTON & OXFORD

PHARMECISTS

—

CAMDEN

PHONE 6 8672

CARRY

**FULL VETERINARY STOCKS OF
INSTRUMENTS AND DRUGS**

Repairs to the extent of £150 were effected during 1876: again in 1878 Captain Onslow urged extensive painting and repairs to school and residence, which stood on a site bounded on the south and west by land belonging to Sir William Macarthur and on the east by the railway. Toward the end of the same year further improvement was effected by the building of a two-roomed weathershed, which, in view of the many absences caused by wet weather, was sorely needed. Mrs. Mills, the teacher's wife, died during this period and the teacher requested that his housekeeper, an elderly lady, be appointed sewing mistress.

Rather extensive renovations were effected to the residence and the school in 1886 by Mr. William Craft for £25. All woodwork was painted, guttering replaced and window panes renewed. At the same time the slabs in the weather shed were replaced and the boundary fence restored. Mr. Robert Harper assumed control of the school in 1890 and in the next year mapping, drawing, writing and illuminating work of pupils was exhibited at both Camden and Picton Shows. In November 1891 school work was on show for parents and on the evening of Arbour Day money was raised to establish a library, buy tools for gardening and lamps for school use.

An area of land on the western side of the school ground with a frontage of 200 feet and a depth of nearly 436 feet was required by the Department. The owner, Mrs. Onslow, refused to sell for less than £200. Messrs. Richardson and Wrench Ltd. valued the land at £118.

Mr. Harper stated that while the district suited his health, Mrs. Harper's health had deteriorated. In addition the school attendance was decreasing and he applied for removal. He was loath to move because of the beautiful surroundings and claimed that he was happy there. However, he was not transferred. Instead extensive repairs, necessitating the closure of the school for two weeks, were carried out in 1892, which no doubt helped to make life more comfortable for the teacher's family.

F. C. WHITEMAN & SONS

PTY. LTD.

PRODUCE AND GENERAL STOREKEEPERS

CAMDEN 6 9201

SOUTHERN RADIO PTY. LTD.

CAMDEN — CAMPBELLTOWN

T.V. SPECIALISTS

WELL KNOWN BRANDS — PYE, PHILLIPS, H.M.V.,
ADMIRAL, ETC.

LEADING MAKES OF REFRIGERATORS
TRADE INS — EASY TERMS — WE INSTAL
WE SERVICE

M. BRIEN, Manager

VICARY'S NURSERY

WHOLESALE AND RETAIL NURSERYMAN

PHONE CAMDEN 6 8542

SEEDLINGS — SHRUBS — FRUIT TREES — ROSES
INDOOR PLANTS — FERN BASKETS — TUBEROUS
BEGONIA — CYCLAMEN

Mr. Harper and the citizens organized an Arbour Day function at which, in December 1892, between 200 and 300 people were present. Prizes were given to pupils for flowers and vegetable beds, pot plants and even for collections of local ferns. Over a number of years 52 shade trees and 20 citrus trees had been planted in the playground and visitors declared that "the playground gardens are exceedingly well looked after."

Mr. William Kemp in 1897 took the place of Mr. Harper and to add to the comfort of the new teacher a brick kitchen was added to the residence at a cost of £51/4/-. To provide for the pupils' comfort a hatroom to the school was added in 1898.

Epidemics were common in the 19th century and early in this century. For example, in 1903 Mr. Kemp reported that five families were suffering from measles and because of an attack in the teacher's home the school was closed from 19th to 30th October.

Meanwhile the school and residence were in urgent need of replacement and in 1904 the owners of the Camden Park Estate were prepared to offer half an acre on the west side of the school ground to the Department free of cost on the understanding that a building would be erected. This kind offer was accepted but no attempt was made to build upon the site. The Menangle Progress Association, in July, 1905, believing the school and residence unfit for use, appealed to the Director of Public Health for their assistance. The District Inspector recommended that new buildings be erected but lack of funds had prevented any positive action. At last tenders were invited, and during 1906 the successful tenderers, Hindes and Farindon, erected a school designed to hold 50 pupils as well as a residence for £564/16/6. Early in 1907 a new fence was erected round the building and with material from the old building, two new rooms were added to the teacher's residence.

KELLOWAY & SMART PTY. LTD.

COMPLETE MODERN HOME FURNISHERS

**LICENSED REAL ESTATE AND BUSINESS AGENTS,
AUCTIONEERS, VALUERS**

Agents:—

NATIONAL INSURANCE CO. OF NEW ZEALAND
MELLO-LITE ALUMINIUM AWNINGS, BLINDS AND
FLYSCREENS

SOUTHERN DISTRICT STARR-BOWKETT BUILDING
SOCIETY

180 ARGYLEST., CAMDEN

— PHONE 6 8063

H. C. SOUTHWELL PTY. LTD.

GENERAL ENGINEERS AND

FARM MACHINERY AGENTS

CAMDEN

— PHONE 6 8217

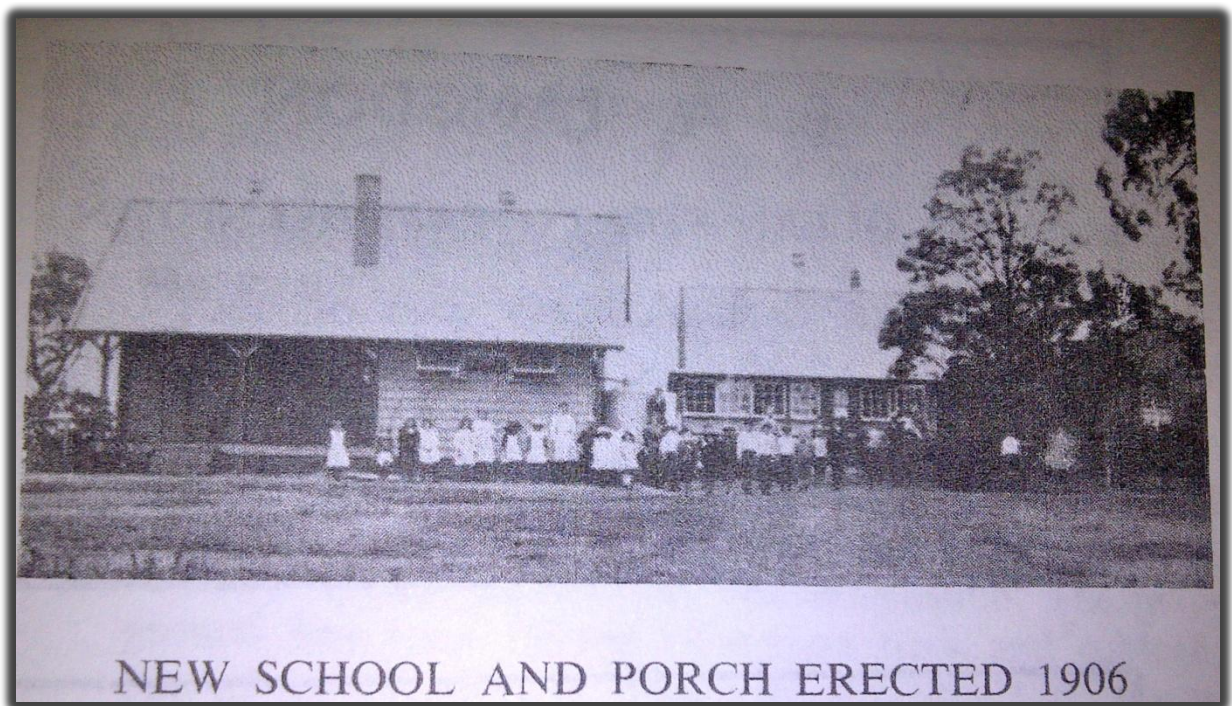
GLENELG DRY CLEANERS

15 PATRICK STREET, CAMPBELLTOWN

'PHONE 2 1259

FOR FREE PICK - UP

AND DELIVERY



The Chief Inspector, Mr. Dawson, was very concerned about the irregularity of attendance in some schools, one school he noted was Menangle. Mr. Jones, who had taken charge of the school in February, 1906, explained that for several months during 1907 the railway bridge at Menangle was being repaired and the children of these men attended school at Menangle. Naturally this floating population gave a false impression of irregularity of attendance. As well, one whole family of six was absent for six weeks as a result of diphtheria epidemic.

When the Great War broke out, the Menangle School was used during the Christmas vacation for sleeping purposes for noncommissioned officers at military schools held nearby. The military authorities considered that 30 N.C.O.'s and six officers could be accommodated satisfactorily in this building. During the war years repairs were carried out in the residence which had been evidently seriously affected by the ravages of white ants. In 1917 the dampness of one corner of the residence was causing severe concern and these and other defects were remedied by Mr. D. McDonald by November 1917.

E. A. LANGDON

180 QUEEN STREET, CAMPBELLTOWN

THE CAMPBELLTOWN AND DISTRICT
REAL ESTATE SPECIALIST

PHONE CAMPBELLTOWN 2 1496
or after hours C'town 2 1336

FOR QUALITY UNSURPASSED

TRY . . .

A. C. HEWER & SONS

QUALITY BUTCHERS

245 QUEEN STREET, CAMPBELLTOWN

PHONE 2 1254

YOUR MONEY BUYS MORE AT

G & G STORE

CAMPBELLTOWN

Mr. Jones' successor was Mr. William Campbell, who was an enthusiast in agriculture. Almost, on taking charge, he requested large quantities of wire netting to enclose plots. His request was granted and by May 1922 the parents and he had satisfactorily completed the work.

Mr. P. W. Heffernan, Secretary of the local Parents and citizens' Association, in December of the same year pointed out that:

"Since the inception of the Menangle Parents and Citizens' Association, the following work has been carried out by members of the Association. The playground has been cleared of useless trees and rubbish; one of the trees, a large ironbark, was a danger to the pupils. Many old trees and stumps have been cleared from the premises, the garden site grubbed and ploughed and generally cleaned up. The material supplied for the purpose has been erected around the gardens and the same painted without expense to the Department. A splendid flagpole 45 feet high has been constructed, painted and erected. Three hundred and fifty feet of piping supplied by the Department has been laid down, and the fittings adjusted for a water supply for the school gardens. A tennis court has been put down in the playground."

With the financial assistance of the Department of Education, the teacher, senior boys and Parents and Citizens' Association erected new fencing around the school in 1924.

The conscientious work of the Parents and Citizens' Association on the behalf of the school was evidently of great assistance to Mr. Campbell, who has organized a very fine school garden: in 1927 he declared that:

"This school usually wins a number of prizes at Teacher's Federation Horticultural Society's Flower Show and we are holders of the Camden Vale Cup awarded to the best school garden within 50 miles of Sydney." Mr. Campbell was succeeded by Mr. Broody in 1928.

BE MODERN — BUY QUALITY FURNITURE FROM

MAURICE BLOOM & SONS

PTY LTD.

QUEEN STREET, CAMPBELLTOWN

PHONE 2 0271

V. N. HARRIS

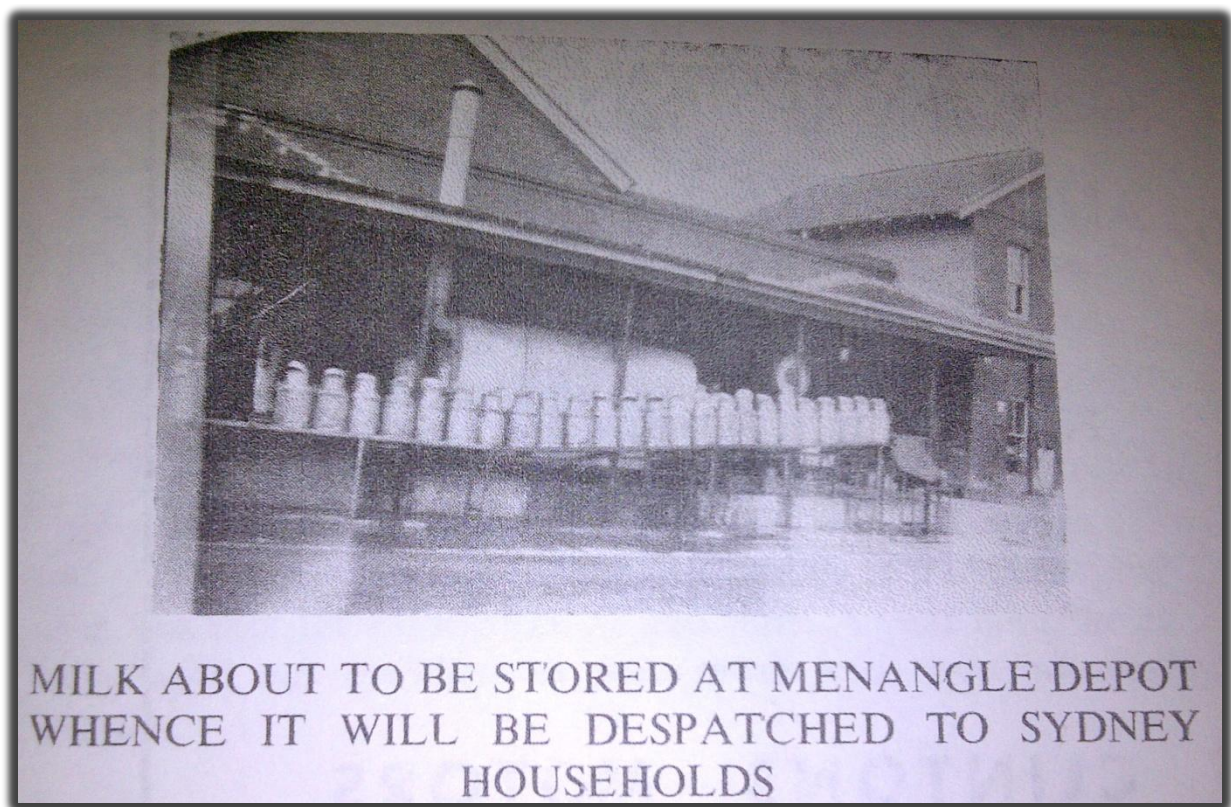
CORNER PHARMACY — CAMPBELLTOWN

FOR REVLON AND INNOXA COSMETICS

TRY US FOR SUNGLASSES AND SUNTAN
PREPARATIONS

HOPKINS DELICATESSEN

QUEEN STREET, CAMPBELLTOWN
CHOICEST POULTRY, HAMS AND
SMALLGOODS



When the Parents and Citizens' Association realized that Mr. Campbell's transfer was imminent, the Secretary, Mr. Heffernan protested to the Department declaring that:

"...full consideration be given to the matter of maintaining the high standard to which the school has been brought, both in connection with the education side and also the school surroundings. The garden is the talk of the whole district, which the children have gained much knowledge from."

Mr. Brodie arrived from Curlewis after attending his father's funeral, and he did not take charge till 2nd July. A severe epidemic of scarlet fever in July of the following year reduced the average attendance for one week to as low as 8.3, out of a school enrolment of 54.

The residents continued their practical support of the school and the next year an Australian flag, a picture of "The Landing" (probably that of Cook or the Anzacs at Gallipoli) a barometer and a thermometer were added to the school's equipment. Between 1929 and 1934 the economic depression

CONGRATULATIONS
AND THANKS

TO MENANGLE SCHOOL

For its part in establishing this District
that we're all so proud of
HAPPY 90th BIRTHDAY!

from

CLINTONS MOTORS

PICTON — CAMDEN — CAMPBELLTOWN

COUNTRY'S LARGEST "ALL LINES" G.M. DEALER

**AUSTRALIAN & INTERNATIONAL
INSURANCE LTD.**

Reg. Office: A. & I. BUILDINGS, 26-32 KING STREET,
MELBOURNE

ALL TYPES

INSURANCE

EFFECTED

N.S.W. Branch: MACQUARIE HOUSE, 17 MACQUARIE PLACE,
SYDNEY

Phones: BU 2344 — BU 2477

Or Contact: D. NANCE — THIRROUL 976

seriously affected the activities of the Department of Education: schools were often left unrepaired and there existed, as well, a serious shortage of teachers. Mr. Brodie's assistant, Mrs. Cameron, was transferred in February 1933, leaving the teacher with 48 children to educate in two rooms. After a petition signed by many residents was lodged with the Department a replacement was sent to Menangle.

WHO REMEMBERS "BROWN DICK"

Several improvements were effected in the 1930's. The old weather shed was finally demolished and a new one erected in 1937 after persistent representation to Mr. Drummond, the Minister for Education, at that time. A year later the electric light was installed in the school and residence during March.

LIST OF TEACHERS

Name	Date Appointed
Henry Mills	May, 1871
(In February 1874 Mr. Mills took charge of Campbelltown Church of England School, but Returned to Menangle on 5 th October, 1874)	
Robert Harper	March, 1890
William C. Kemp	January, 1897
John Jones	February, 1906
William Campbell	October, 1921
Samuel Young	November, 1926
John Brodie	May, 1928
Ernest Jones	May, 1937
Stanley Richardson	June, 1942
Alison Fairby	May, 1944
Hector Bell	June, 1944
James Murray	July, 1947
Walter A. Tomkins	September 1949

DOWNES

OF CAMPBELLTOWN & CAMDEN

TAKE THIS OPPORTUNITY OF
CONGRATULATING THE MENANGLE
SCHOOL ON THE OCCASION OF THEIR
90th ANNIVERSARY

**WE ARE SPECIALISTS IN ALL SCHOOL
REQUIREMENTS**

- SCHOOL UNIFORMS
- SCHOOL SHOES
- SCHOOL STATIONERY

CAMPBELLTOWN BAKERY

PTY. LTD.

QUEEN STREET, CAMPBELLTOWN

**FOR ALL KINDS OF CHOICEST BREAD, BUNS, ROLLS,
CAKES AND SMALLGOODS**

PHONE 2 1042



MENANGLE SCHOOL, 1949

Back row: Left to right — A. Goldsmith, W. Curry, S. Rideout, B. Thurtle, F. Land, P. Chetcuti, C. Goldsmith, J. Rideout, J. Smith, C. Keegan.

Middle row: M. Land, B. Thurtle, J. McKnight, A. Land, M. Biddle, E. Rideout, C. Biddle, S. Howlett, L. Baker, R. Hawkey, N. Rideout, M. Chetcuti, K. New, E. Smith, I. Hunt, G. Chetcuti, F. Smith.

Front row: K. Grady, J. Rice, D. Cummins, M. Starr, S. Black, E. Curry, H. Evans, N. Rush, B. Templeman, R. Starr, A. Smith.

In 1949-50 there were 43 children attending the school. These rooms were packed into one room as the furniture from the second room had been, perhaps prematurely, removed to Minto, where growing demands for accommodation were acute.

Children from this school had heretofore gone to Liverpool or some other suburban High School, However, with the opening of Camden High School the flow of super primary children went there. With the opening of the High School at Campbelltown the following year and the institution of a bus service, all High School children from Menangle now go to Campbelltown.



Back row: I. Hunt, N. Rideout, S. Rideout, B. Thurtell, A. Goldsmith, C. Finneran, Mr. A. Tomkins (teacher).
 2nd row: E. Goldsmith, J. McKnight, C. Biddle, E. Rideout, E. Thurtle, R. Hawkey, S. Howlett, M. Biddle, B. Thurtell, D. White.
 3rd row: J. Mooney, T. Hodgson, B. Templeman, K. New, T. Finneran, P. Finneran, R. Finneran, J. Evans.
 Front row: R. Blum, L. Sharpe, J. Ellsmore, N. Rus's, E. Curry, S. Black, D. Cummins, K. Grady.



FANCY DRESS COSTUMES AT CHRISTMAS BREAK-UP, 1954

Back: F. McKay, D. Cummins, I. Burns, L. Sharpe, E. New, B. Templeman, K. New,
E. McGrath.

Middle: K. McGrath, A. Gardner, M. Gay.

Front: R. Sharpe, J. Evans, J. Jeffry, A. Murray, J. Burns, R. Gardner, J. McKay.

In 1950 application for renewal of the fence on the western side of the school site was made. This was deferred time after time until eventually, in 1960, two additional acres were obtained from Camden Park Estate. The old paling fence was demolished and a new post and wire fence erected to enclose the additional area.

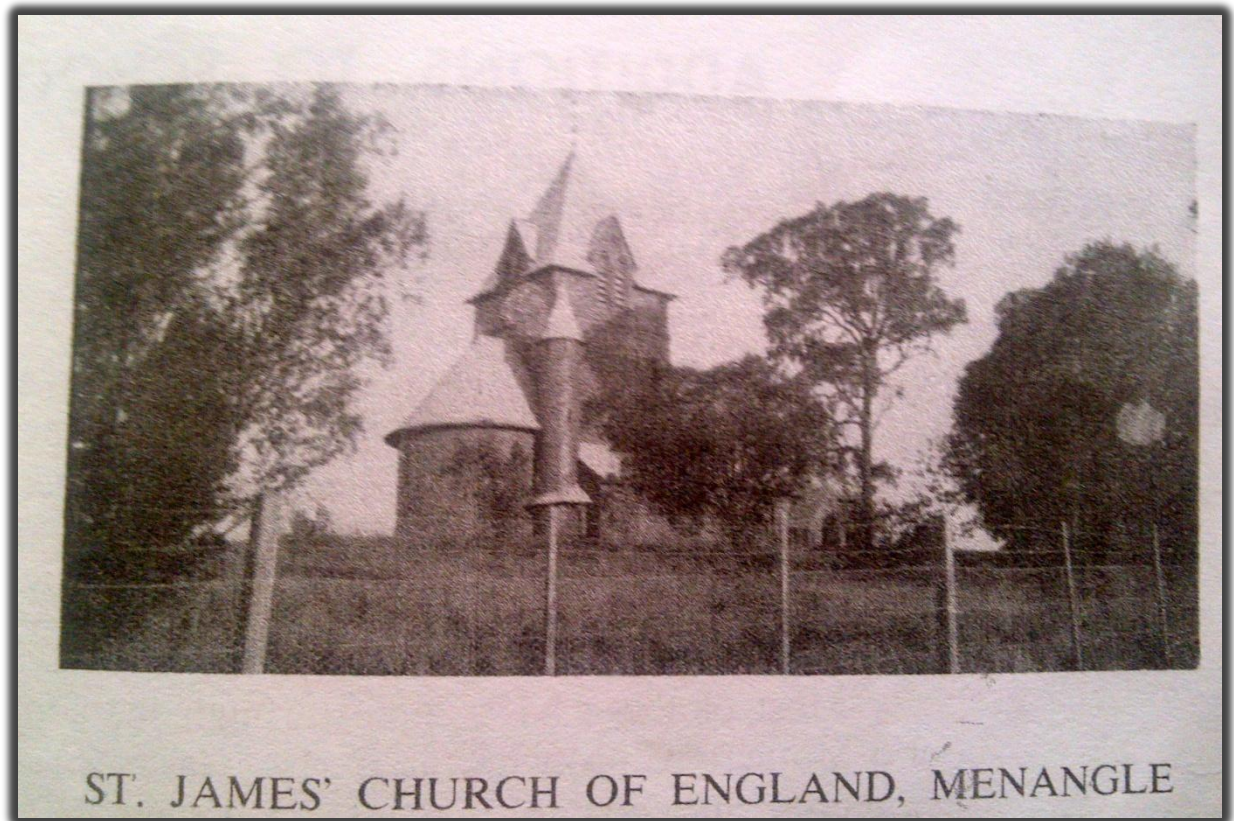
In 1960 the school building was renovated and repaired, reroofed and painted both internally and externally. New brick toilets were erected, the shed renovated and painted, and

a concrete assembly area and paths were laid down. A new 40 ft flag pole was also erected. The whole of the above work cost in the vicinity of £3,000.



Also in 1959 a survey was made of the condition of the residence. After two days of intense investigation and tabulating of defects it was found that the cost of repairs would be very great. At the teacher's suggestion consideration was given to the erection of a new residence in lieu of repairs to the old one. This was agreed upon, firstly for a timber building, but later changed to brick veneer and brick garage.

Thus it comes that the opening of the new residence coincides with the 90th anniversary. The function on 4th November 1961 brings about reunion of old and present pupils of the school, to each of whom we offer heart-felt and joyous wishes for a happy association.



FAMILIES OF THE DISTRICT

Besides the Macarthur and Onslow families, who later became the Macarthur-Onslows, Menangle has had the happy association of many other notable families. Sons and daughters, grand-sons and grand-daughters have succeeded one another over the years.

We find the Currys, Cummins, Dowels, Finns, Hawkeys, Hunts, Heighingtons, Barretts, Rofes, Starrs, Camerons, English, Veness, Templeman, McGraths, New, Crisp, Burrell still well to the fore in the village history. The later arrivals too, are closely associated with the affairs of the community.

ADDITIONS TO SCHOOL

TEACHING AIDS

Since 1949 many new items have been added to the school's teaching aids. They include a Cinevax Premier 16 m.m. projector, a radiogram, records for some, four sets of large pictures, 1 set of Oxford University Press Encyclopaedias, crockery. A Clyde Rotary Scythe was also purchased.

Most of these have come through the continued efforts of a Mothers' Club, with, first, Mrs. Gardner as a very active secretary and now Mrs. Gillies following in her footsteps.

The establishment of the Rotolactor, the only revolving milking device in the British Empire, near the school has brought much publicity to Menangle.



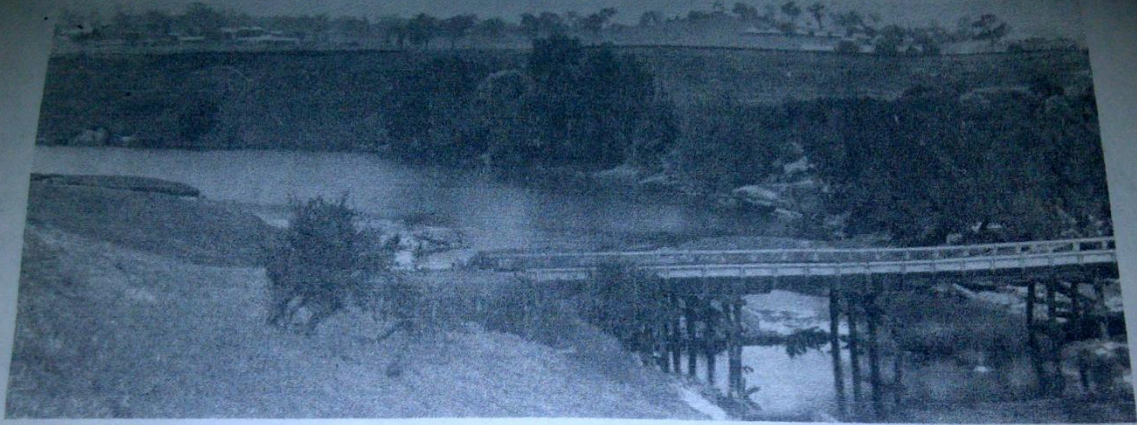


"GILBULLA," A MACARTHUR-ONSLOW HOME, NOW THE CHURCH OF
ENGLAND CONFERENCE CENTRE

The iron bridge across the Nepean River at Menangle is the oldest railway bridge of its kind in Australia and a function to celebrate its centenary in the next year, on 7th July, 1962, is being discussed.

St. James' Church of England is an attraction to the many visitors to Menangle. Occupying a commanding position, it is a landmark of the district.

Gilbulla, a former home of one of the Macarthur-Onslow families is now a conference centre for Church of England groups and attracts many visitors. World Council of Churches within Australia holds conferences there regularly.



MENANGLE SWIMMING POOL WHERE "LEARN TO SWIM" CLASSES
ARE HELD EACH SUMMER



THE ROTOLACTOR

There is only one other Rotolactor of similar size in the world. Designed about 30 years ago by Mr. Henry Jeffers, it still operates most efficiently for the Walker Gordon Laboratory Coy., in New Jersey, U.S.A. The Camden Park Rotolactor is entirely designed and manufactured in Australia by Australians. It started operating in September, 1952. The Rotolactor is designed to milk 2,500 cows twice daily.

Blank page

"Camden News" Print